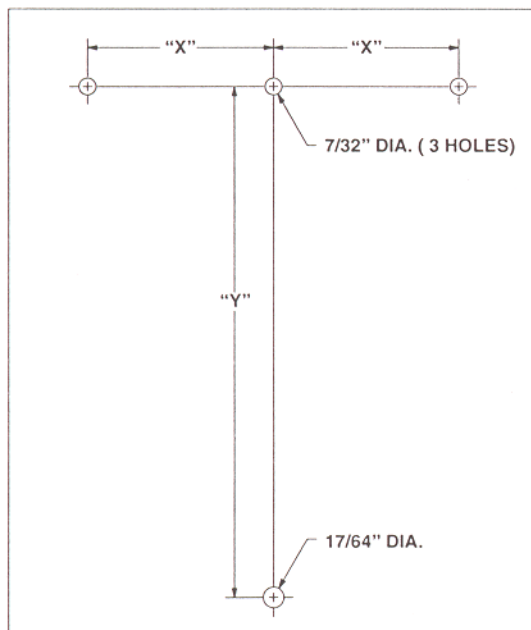


**READ THIS MANUAL CAREFULLY BEFORE INSTALLING,
OPERATING OR SERVICING THIS EQUIPMENT.**

GENERAL DESCRIPTION

Model 59097-() hinged circuit mounting plate is designed to mount APLC circuits in electrical enclosures (or similar boxes) and to provide easy access to both sides of the circuit board. Models 59097-4 and 59097-41 are used for 4 x 4 circuit boards, models 59097-6 and 59097-61 are used for 6 x 6 circuit boards and models 59097-8 and 59097-81 are used for 8 x 8 circuit boards.

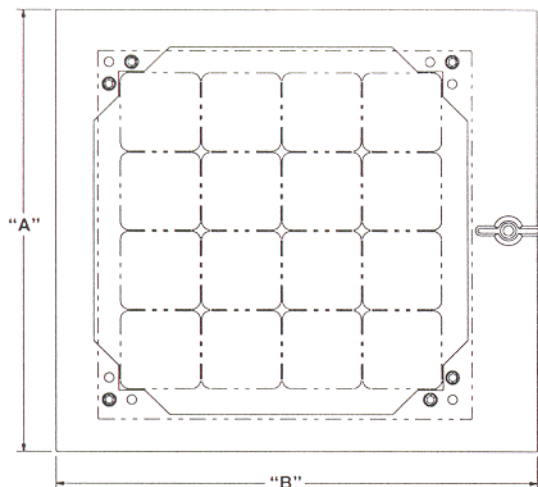


INSTALLATION

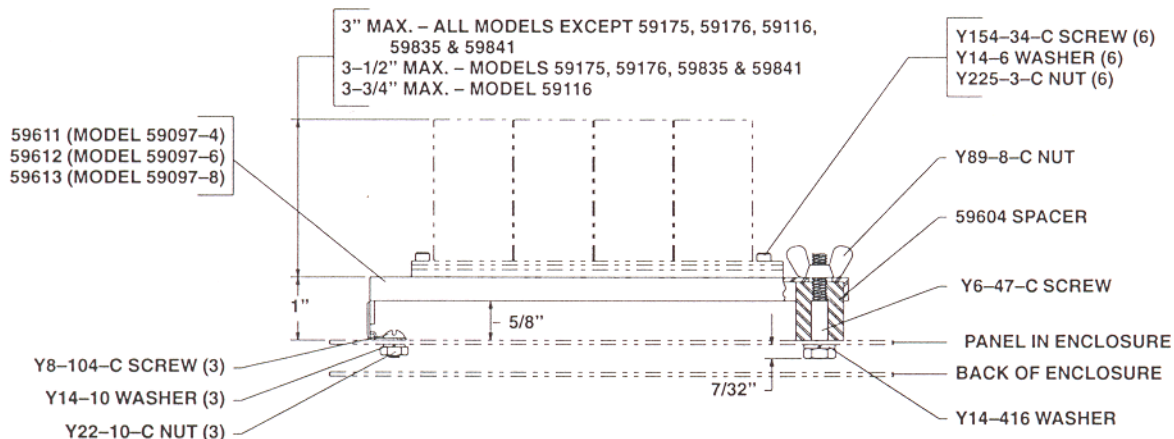
Model 59097-() mounting plate is mounted to the removable panel of the enclosure or box. Drill three 7/32" diameter holes and one 17/64" diameter hole in the panel per drilling layout below. Allow room for the APLC circuit to clear the side of the enclosure when it is swung out. Attach 59604 or 59701 spacer to the panel with Y6-47-C or Y6-414-C screw and Y14-416 lockwasher. 59604 or 59701 spacer must be installed with the unthreaded end next to the panel. Attach model 59097-() mounting plate to the panel using three Y8-104-C screws, three Y14-10 washers and three Y22-10-C nuts. The APLC circuit is mounted to the plate using six Y154-34-C screws, six Y14-6 washers and six Y225-3-C nuts. CAUTION: When mounting the circuit board to the model 59097-() mounting plate, torque the Y154-34-C screws to 10 - 12 in. lbs. The mounting plate is held in place by the Y89-8-C wing nut.

DRILLING LAYOUT

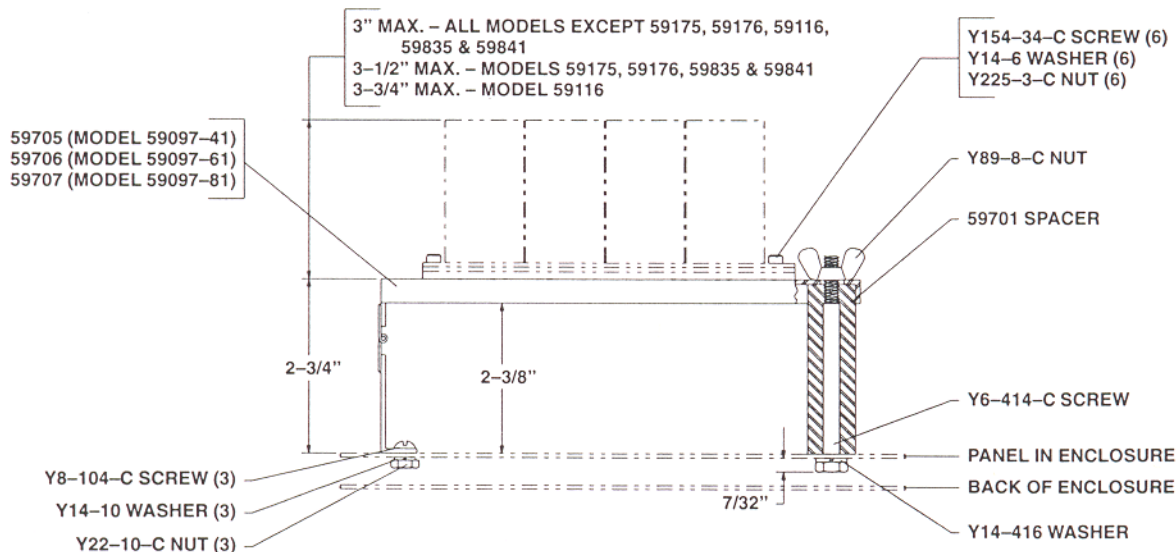
MODEL	"X"	"Y"
59097-4	2-3/8"	6-19/32"
59097-41	2-3/8"	6-19/32"
59097-6	3-5/8"	9-3/32"
59097-61	3-5/8"	9-3/32"
59097-8	4-7/8"	11-19/32"
59097-81	4-7/8"	11-19/32"



MODEL	"A"	"B"
59097-4	7"	7-1/2"
59097-41	7"	7-1/2"
59097-6	9-1/2"	10"
59097-61	9-1/2"	10"
59097-8	12"	12-1/2"
59097-81	12"	12-1/2"



MODELS 59097-4, 59097-6 AND 59097-8



MODELS 59097-41, 59097-61 AND 59097-81